

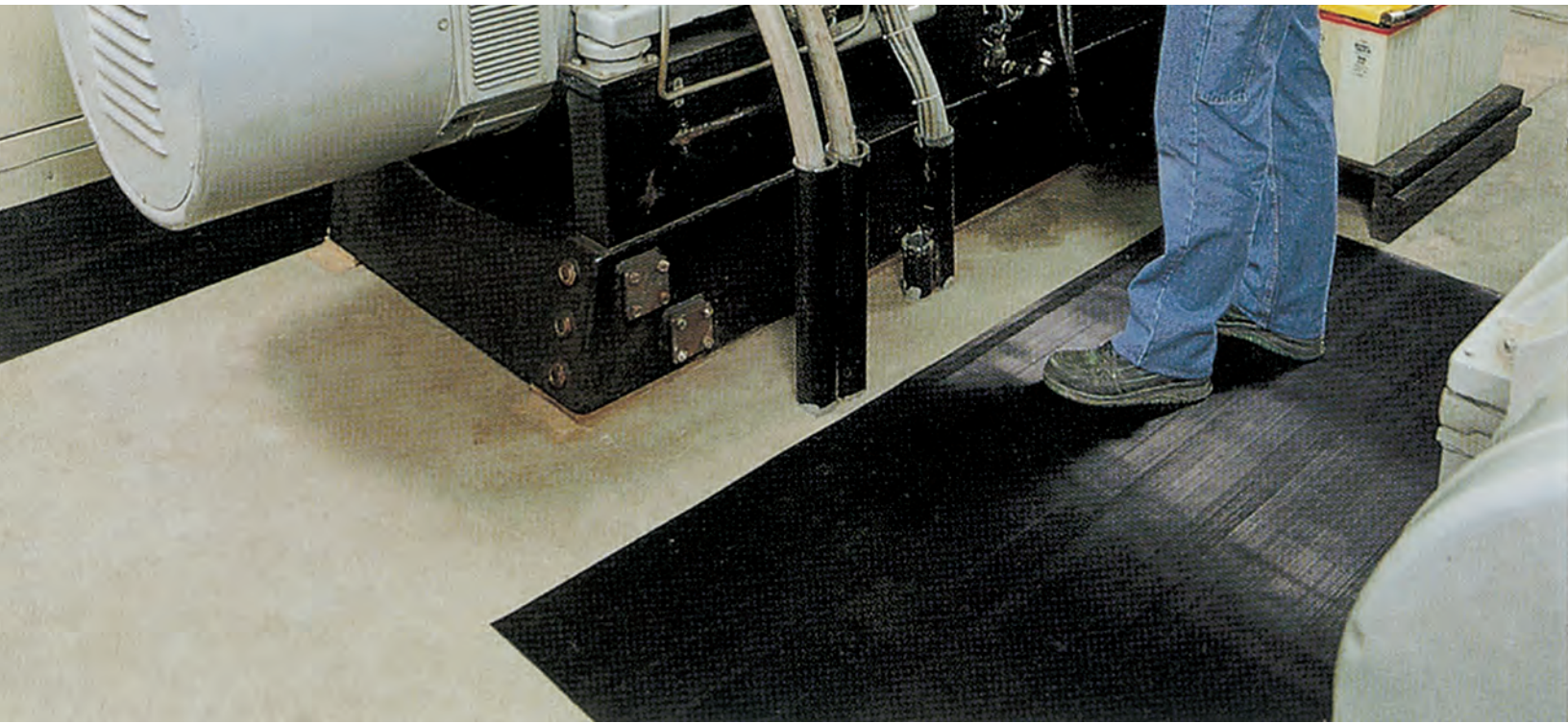


Justrite Safety Group

830 - SWITCHBOARD MATTING - CORRUGATED

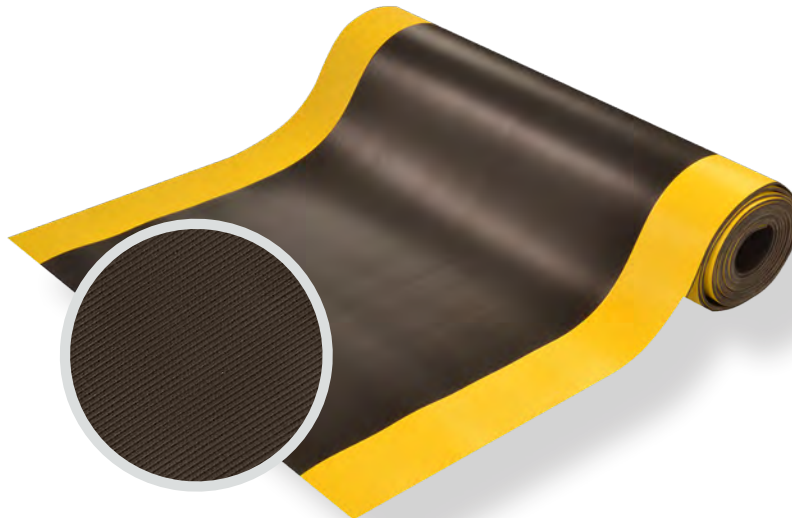
PRODUCT INFORMATION BROCHURE





For over 70 years, the name Notrax[®] has meant superior quality, service, and innovative products. Now this brand is a cornerstone of Justrite Safety Group, offering the widest selection of products to a variety of markets and applications including entrance mats, anti-fatigue/safety mats, and products designed specifically for use in professional food service environments. Notrax[®] offers a complete selection of floor matting options to meet any application requirement, quality expectation, and budget.

- **Track record of manufacturing high quality mats for over seventy years**
- **All products are manufactured in ISO certified facilities**
- **Notrax[®] offers anti-fatigue matting, entrance matting, safety matting, food service matting and specialty mats designed for a variety of industries**



830 - SWITCHBOARD MATTING - CORRUGATED is a non-conductive floor matting made from a PVC compound, designed to provide insulation for the worker. The mat prevents the worker from being grounded, thereby eliminating the possibility of electrical shock. The corrugated saw-tooth top surface provides increased traction and is easy to sweep clean.

Material: PVC

Features and Benefits:

- Insulated matting engineered to protect workers from electric shock
- Electrically Insulative Type 2 PVC compound
- Corrugated top surface - Added traction and easy to sweep clean
- Class 2 Di-electric Strength: 30,000 volts
- Proof test of 20,000 volts
- Recommended maximum use voltage: 17,000
- Each square foot of this matting is tested in conformance with ANSI/ASTM D-178 specifications
- ASTM D-178 printed on underside of mat

⚠ WARNING: This product can expose you to chemicals including di-2-ethylhexyl phthalate and/or diisononyl phthalate which is known to the State of California to cause cancer, birth defects or reproductive harm. For more information, visit www.P65Warnings.ca.gov





MODEL: 830

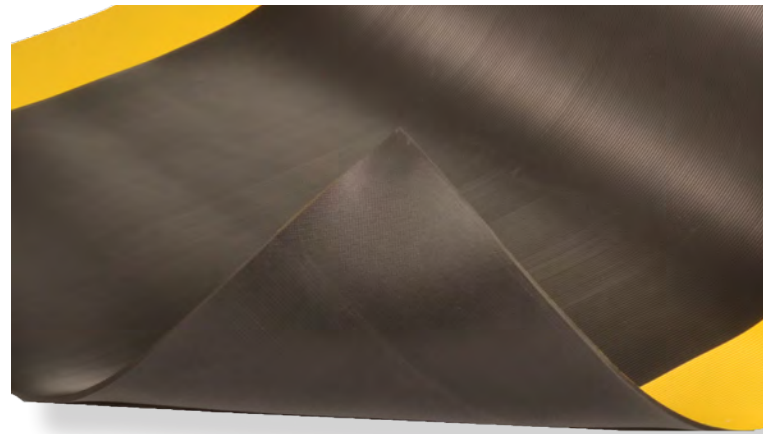
SPECIFICATIONS


APPLICATIONS

- Transformers
- Switchgear
- Distribution Boards
- Generators


Roll Sizes	2'x75', 3'x75', 4'x75'
Thickness	1/4"
Cut Lengths	2', 3', and 4' widths (up to 75' long)
Colors	 Black  Black/Yellow* <small>*only in 3' widths</small>

Performance:	Good	Better	Best	Superior
Wear Resistance	████████████████████			████████
Anti-fatigue Performance	████████	████████	████████	████████
Slip Resistance	████████████████████			████████





Anti-Slip



Cut Lengths



Floor Protection



Non-Conductive

TESTING DATA

Test	Test Description	Results
Electrical Proof Test - ASTM D178	Min. 20,000V for 1 Minute	Pass
Dielectric Breakdown Test - ASTM D149	Min. 30,000V	Pass
O3 Resistance Test Method B ASTM D178	Any Visual Degradation	Pass
Tensile Strength - ASTM D412 DIE C	Min. 700 PSI	1362 PSI
Elongation - ASTM D412 DIE C	Min. 250%	280%
Tension Set - ASTM D412 DIE B	Max. 0.50 In.	0.459 In.
Moisture Absorption - ASTM D570	Max. Increase 3%	0.0965%
Accelerated Aging - ASTM D573	Min. 50% of Original Tensile Strength	1327 PSI (97%)
Flame Resistance - ASTM D178	Max. 0.5 In. / 12.7 mm After 30 sec.	0.154 mm/s
Oil Resistance - ASTM D471	Max. Volume Increase 4%	1.209%

*Testing performed by an independent test laboratory.

NOTRAX®

5655 West 73rd Street
Chicago, IL 60638

PHONE: (800) 621-2802

FAX: (800) 322-7105

EMAIL: saleschicago@checkers-safety.com

www.notrax.com



A PRODUCT OF:



Justrite Safety Group is the leading source of safety equipment for flammables and hazardous materials storage and handling, asset protection, environmental protection spill containment, absorbents, specialized chemical storage, cable management, safety showers and eye/face washes, matting, and vehicle safety equipment. Learn more at Justrite.com, Checkers-safety.com, and Notrax.com.